



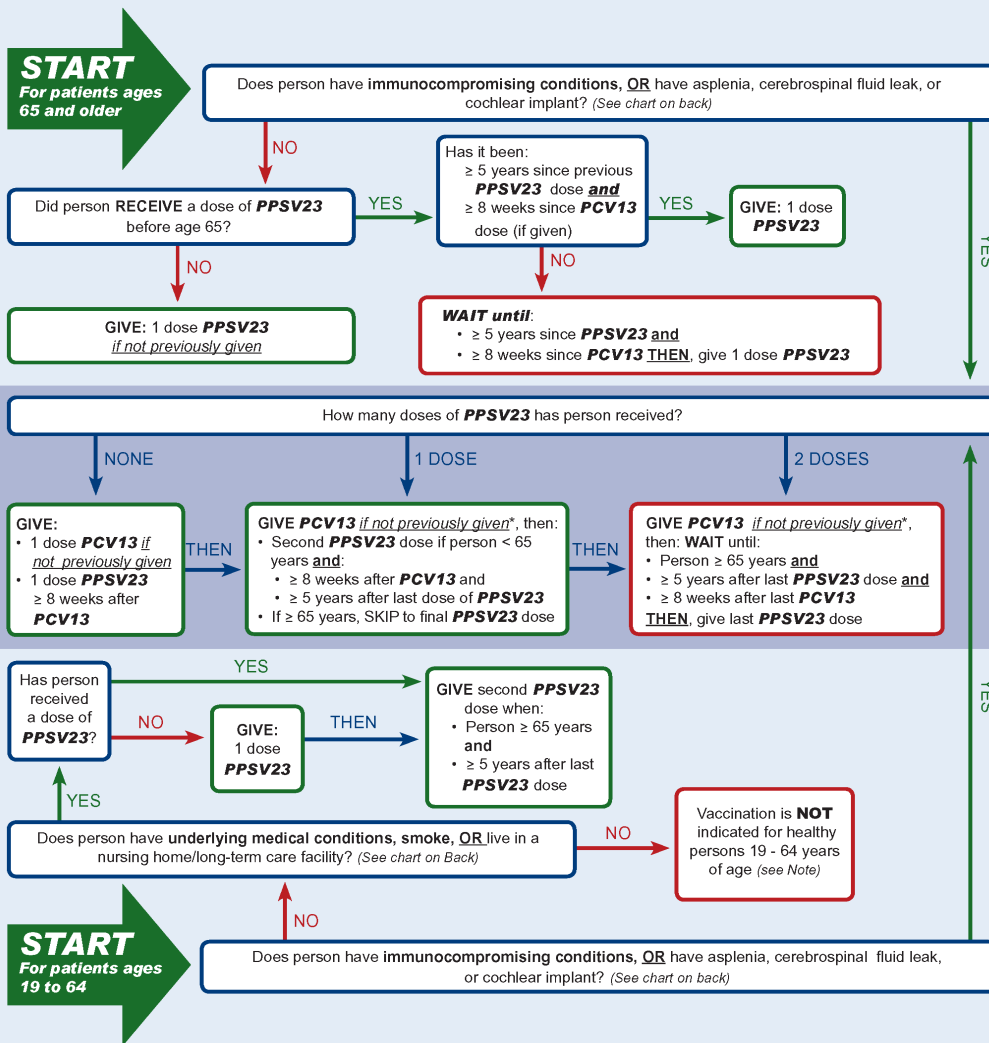
Pneumococcal Vaccination Recommendations

Adults ≥ 19 Years^{1,2}

(Including updated recommendations for the use of PCV13 in Adults)

THE UNIVERSITY OF RHODE ISLAND COLLEGE OF PHARMACY

DRUG INFORMATION SERVICES
401-874-9188



* If PPSV23 given first, wait 12 months before giving PCV13

Note: While PCV13 is FDA-approved for persons > 50 years, the Advisory Committee on Immune Practices does not recommend use in healthy persons.

PPSV23=23-Valent Pneumococcal Polysaccharide Vaccine (Pneumovax®23)

PCV13=13-Valent Pneumococcal Conjugate Vaccine (Prevnar 13®)



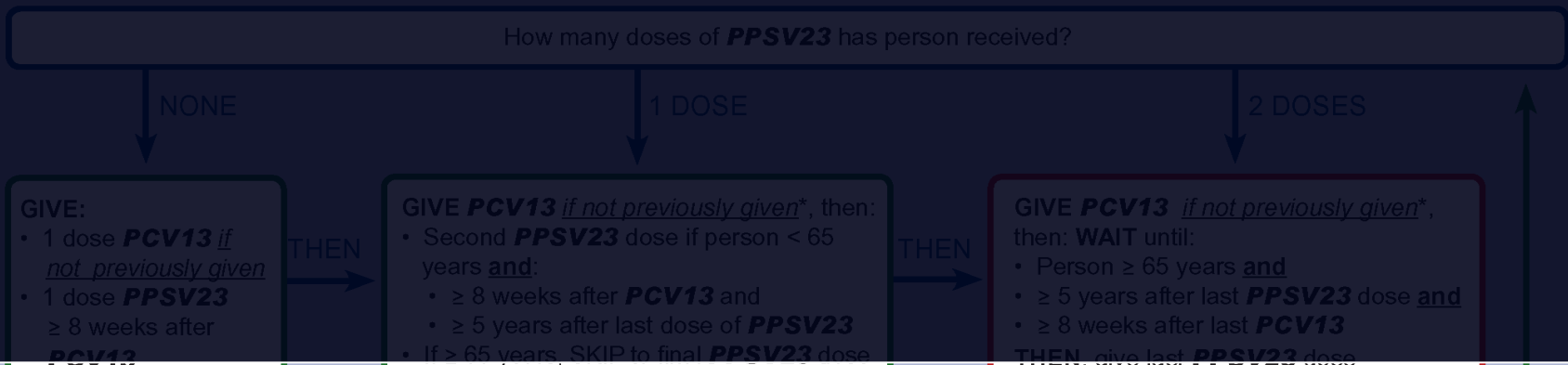
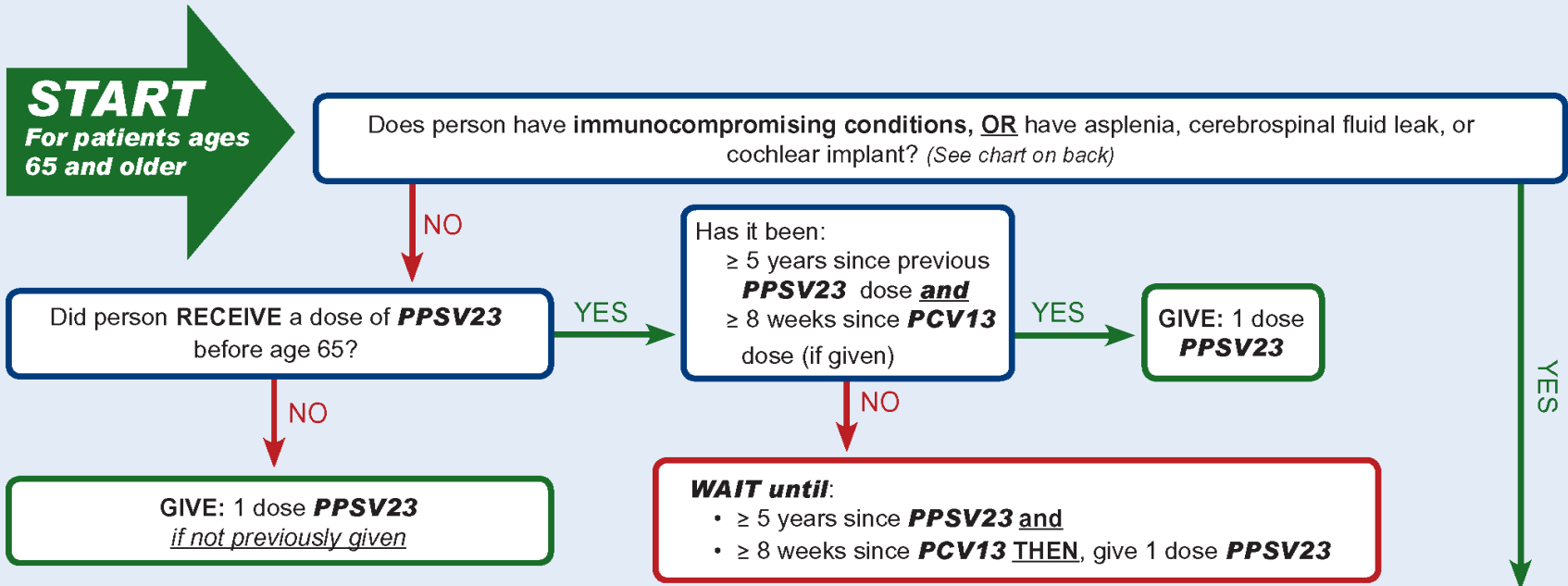
Pneumococcal Vaccination Recommendations

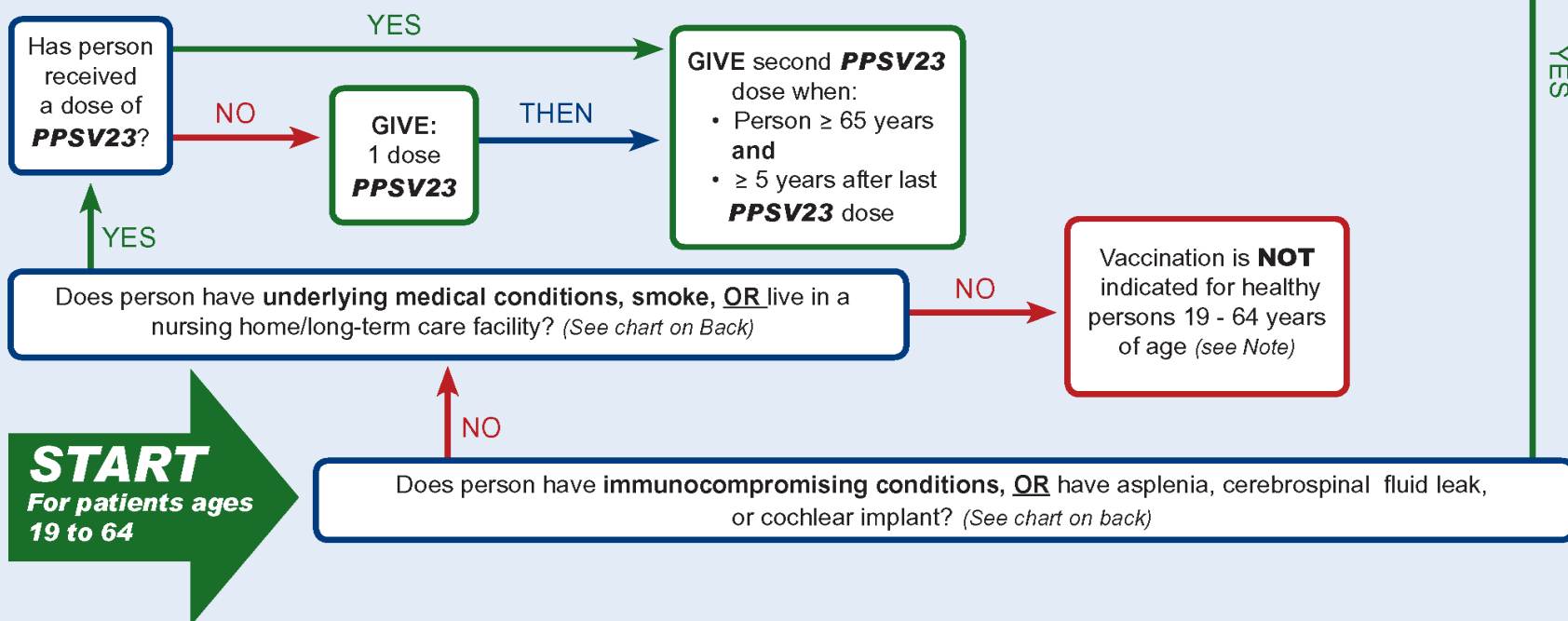
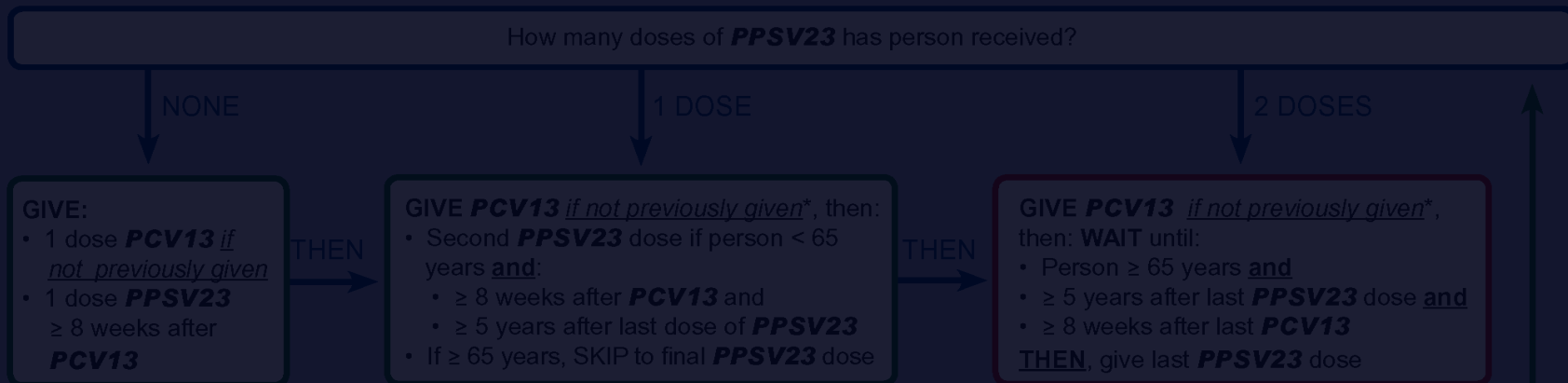
Adults ≥ 19 Years^{1,2}

(Including updated recommendations for the use of PCV13 in Adults)

THE UNIVERSITY OF RHODE ISLAND COLLEGE OF PHARMACY

DRUG INFORMATION SERVICES
401-874-9188





* If PPSV23 given first, wait 12 months before giving PCV13

Note: While PCV13 is FDA-approved for persons > 50 years, the Advisory Committee on Immune Practices does not recommend use in healthy persons.

PPSV23=23-Valent Pneumococcal Polysaccharide Vaccine (Pneumovax®23)

PCV13=13-Valent Pneumococcal Conjugate Vaccine (Prevnar 13®)

Drug Information Services 401-874-9188 Monday-Friday 8:30 am - 4:00 pm EST

START
For patients ages
65 and older

Does person have immunocompromising conditions, OR have asplenia, cerebrospinal fluid leak, or cochlear implant? (See chart on back)

NO

Did person RECEIVE a dose of **PPSV23** before age 65?

YES

Has it been:
≥ 5 years since previous **PPSV23** dose and
≥ 8 weeks since **PCV13** dose (if given)

YES

GIVE: 1 dose **PPSV23**

NO

GIVE: 1 dose **PPSV23**
if not previously given

NO

WAIT until:

- ≥ 5 years since **PPSV23** and
- ≥ 8 weeks since **PCV13** THEN, give 1 dose **PPSV23**

YES

How many doses of **PPSV23** has person received?

NONE

1 DOSE

2 DOSES

GIVE:

- 1 dose **PCV13** *if not previously given*
- 1 dose **PPSV23** ≥ 8 weeks after **PCV13**

THEN

GIVE PCV13 *if not previously given**, then:

- Second **PPSV23** dose if person < 65 years and:
- ≥ 8 weeks after **PCV13** and
- ≥ 5 years after last dose of **PPSV23**
- If ≥ 65 years, SKIP to final **PPSV23** dose

THEN

GIVE PCV13 *if not previously given**, then: **WAIT until:**

- Person ≥ 65 years and
- ≥ 5 years after last **PPSV23** dose and
- ≥ 8 weeks after last **PCV13**

THEN, give last **PPSV23** dose

